

Preliminary English Test for Schools Online Practice Test Free Sample

How to complete the PET for Schools Online Practice Test Free Sample: Reading & Writing

Welcome to the Preliminary English Test for Schools Online Practice Test Free Sample. This is the Reading & Writing Test tutorial. The following instructions will show you how to complete the free sample test.

Mode Screen

You can sit this free sample test in either Test Mode or Learner Mode. To sit the test under exam conditions, click YES next to the Test Mode option.

Online Practice Test for PET for Schools
Free Sample

Mode Menu
You can take this Online Practice Test without help (Test Mode) or choose from the list of learner options (Learner Mode) such as using a dictionary, checking answers etc.

Test Mode
TEST MODE - This will allow you to take the test in exam conditions.

Learner Mode Options

HELP - You can ask for help to answer the questions during the test.

DICTIONARY - You can look up any words in the test using the dictionary.

CHECK ANSWERS - You can check if your answers are correct or incorrect.

CLOCK - A clock will count down the test time. It will also tell you when the test time has finished.

UNIVERSITY of CAMBRIDGE
ESOL Examinations

YES

To sit the test in Learner Mode, click NO next to the Test Mode option.

Online Practice Test for PET for Schools
Free Sample

Mode Menu
You can take this Online Practice Test without help (Test Mode) or choose from the list of learner options (Learner Mode) such as using a dictionary, checking answers etc.

Test Mode
TEST MODE - This will allow you to take the test in exam conditions.

Learner Mode Options

HELP - You can ask for help to answer the questions during the test.

DICTIONARY - You can look up any words in the test using the dictionary.

CHECK ANSWERS - You can check if your answers are correct or incorrect.

CLOCK - A clock will count down the test time. It will also tell you when the test time has finished.

UNIVERSITY of CAMBRIDGE
ESOL Examinations

NO

Within the Learner Mode, there are four options:

HELP: This option allows you to ask for help to answer the questions during the test.

DICTIONARY: This option allows you to look up any words in the test.

CHECK ANSWERS: This option allows you to check if your answers are correct or incorrect during the test.

CLOCK: This option allows you to see a clock that will count down the test time.

If you do not want all of these options, you can select which ones you want by clicking the YES and NO buttons on the screen.

When you are ready to take the Online Practice Test, click START TEST to begin.

In this free sample you can only answer some of the questions, but in the main test, you can answer all of the questions.

**Online Practice Test for PET for Schools
Free Sample**

Mode Menu
You can take this Online Practice Test without help (Test Mode) or choose from the list of learner options (Learner Mode) such as using a dictionary, checking answers etc.

Test Mode
TEST MODE - This will allow you to take the test in exam conditions. YES NO

Learner Mode Options

HELP - You can ask for help to answer the questions during the test. YES NO

DICTIONARY - You can look up any words in the test using the dictionary. YES NO

CHECK ANSWERS - You can check if your answers are correct or incorrect. YES NO

CLOCK - A clock will count down the test time. It will also tell you when the test time has finished. YES NO

START TEST

UNIVERSITY of CAMBRIDGE
ESOL Examinations

MENU

START TEST

The instructions for each part of the test are in the box at the top of the screen.

Reading Part 1, Part 4 and Part 5

To answer a question in Reading Parts 1, 4 and 5, choose one of the answers, for example A, B or C.

Click on the button next to the answer that you have chosen.

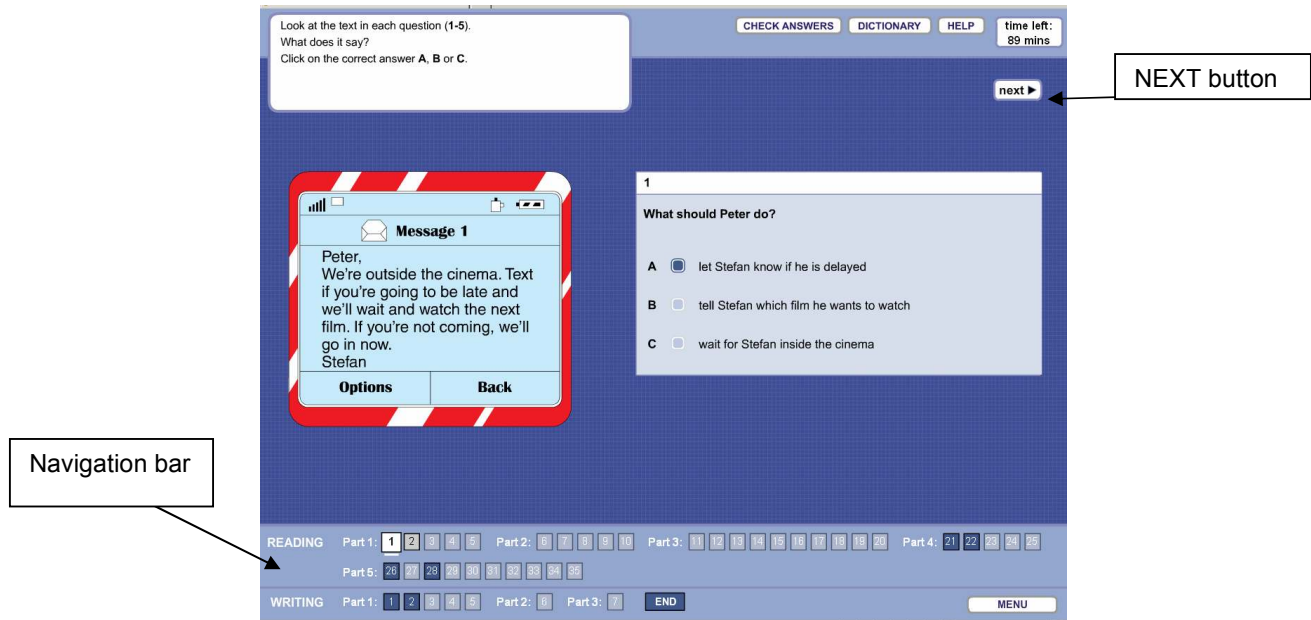
If you want to change your answer, click on another button.

If you want to leave the question without an answer, click on the button again.

The screenshot shows a computer interface for a reading test. At the top, there are buttons for "CHECK ANSWERS", "DICTIONARY", and "HELP", along with a "time left: 90 mins" indicator. Below this, a box contains instructions: "Look at the text in each question (1-5). What does it say? Click on the correct answer A, B or C." An arrow points from a label "Instructions" to this box. The main area displays a question titled "1" with the text: "What should Peter do?". Below the text are three options: A "let Stefan know if he is delayed", B "tell Stefan which film he wants to watch", and C "wait for Stefan inside the cinema". Arrows point from a label "Answer" to each of these three options. On the left, a red and white striped box contains a text message: "Message 1: Peter, We're outside the cinema. Text if you're going to be late and we'll wait and watch the next film. If you're not coming, we'll go in now. Stefan". Below the message are buttons for "Options" and "Back". At the bottom, there are navigation buttons for "READING" and "WRITING" sections, with sub-sections "Part 1", "Part 2", and "Part 3". An "END" button is also present. A "MENU" button is located at the bottom right.

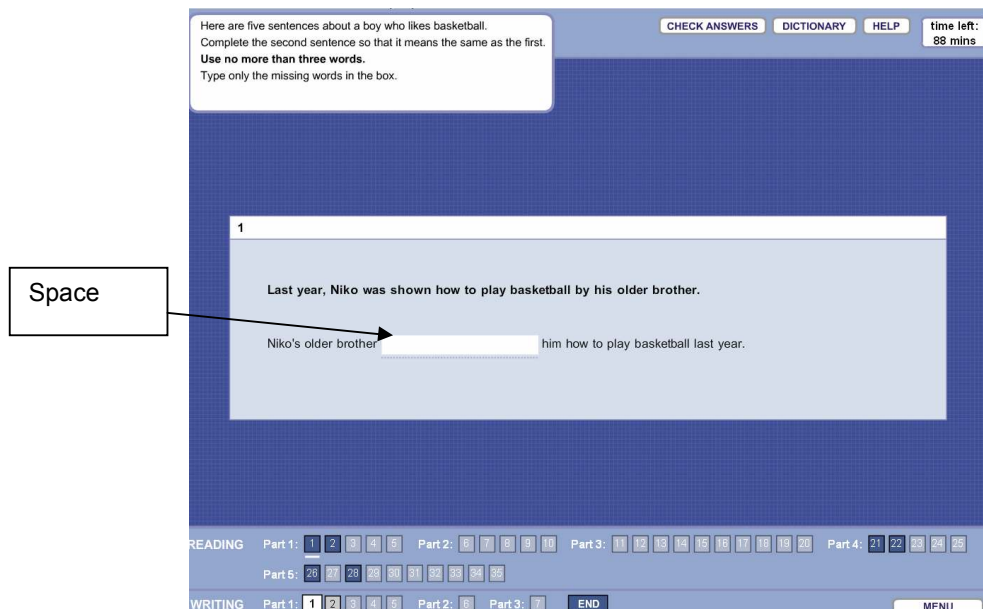
You can use the navigation at the bottom of the screen, or click on the NEXT button to move from one question to the next question. The NEXT button appears every time you have answered a question. You can answer the questions in any order.

The navigation shows which questions you have answered. A line appears under the question number if you have answered the question.



Writing Part 1

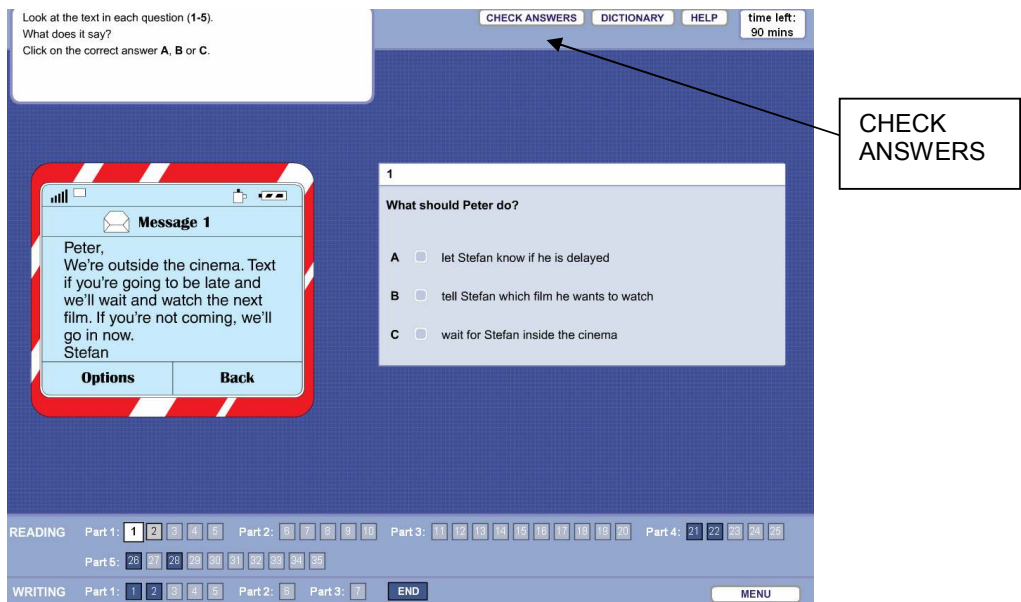
To answer a question in Writing Part 1, type your answers in the spaces.



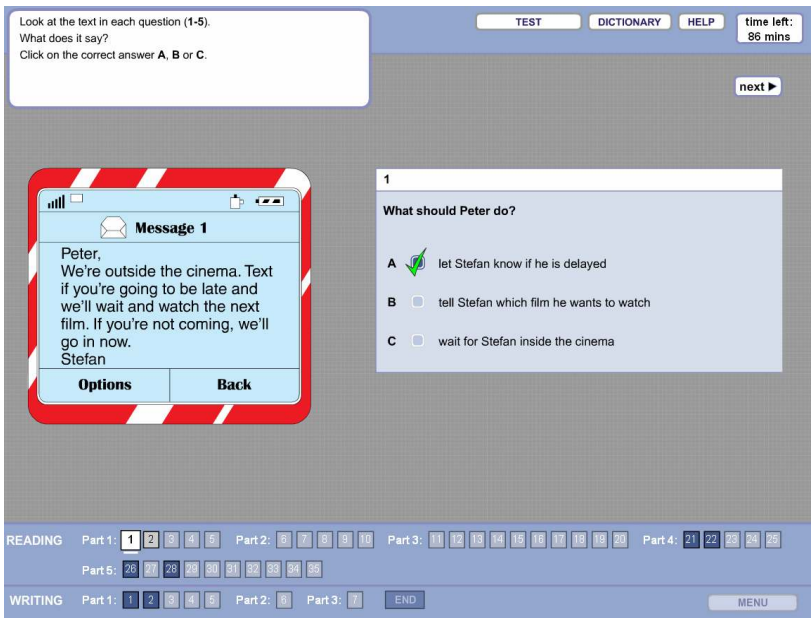
You can review and change your answers at any time until the end of the test.

Learner Mode Functions

If you want to check your answers during the test, click on the CHECK ANSWERS button.

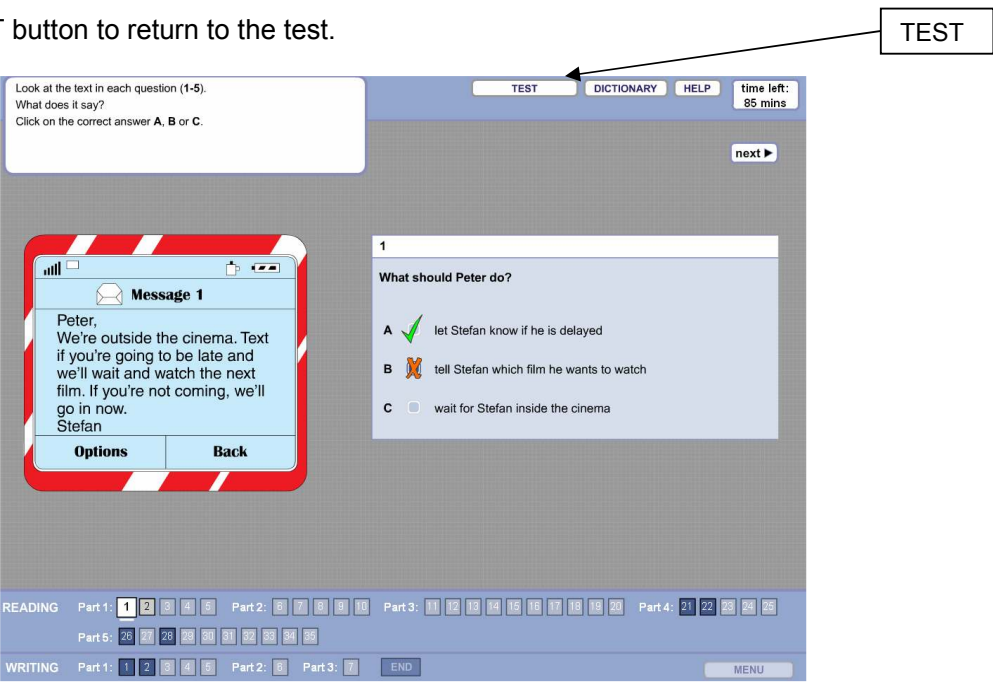


If your answer is correct a tick will appear next to your answer.

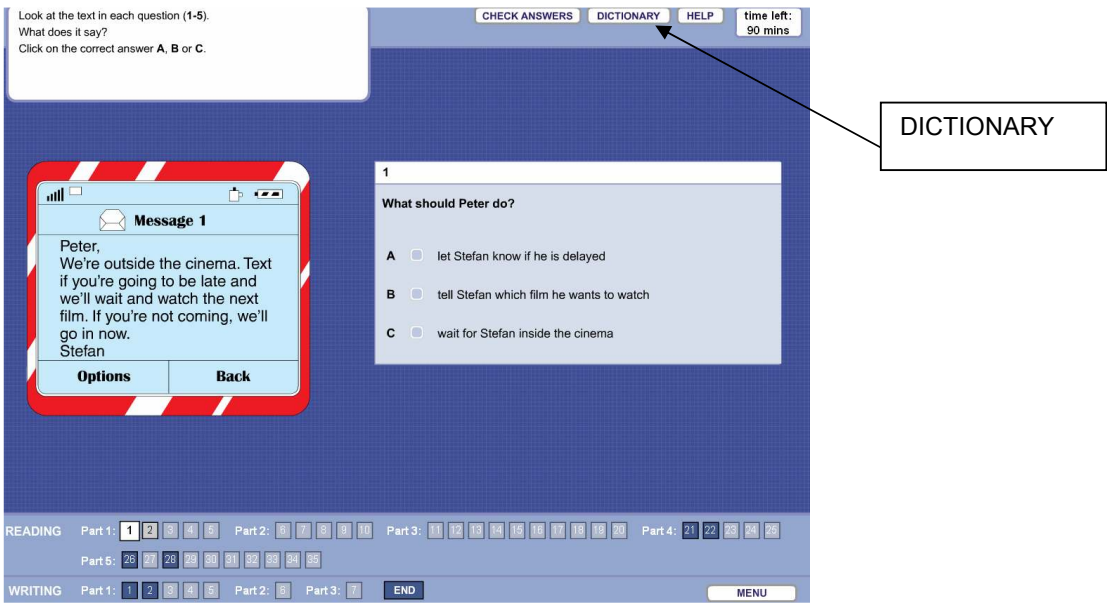


If your answer is incorrect a cross will appear next to your answer and a tick will appear next to the correct answer.

Click the TEST button to return to the test.



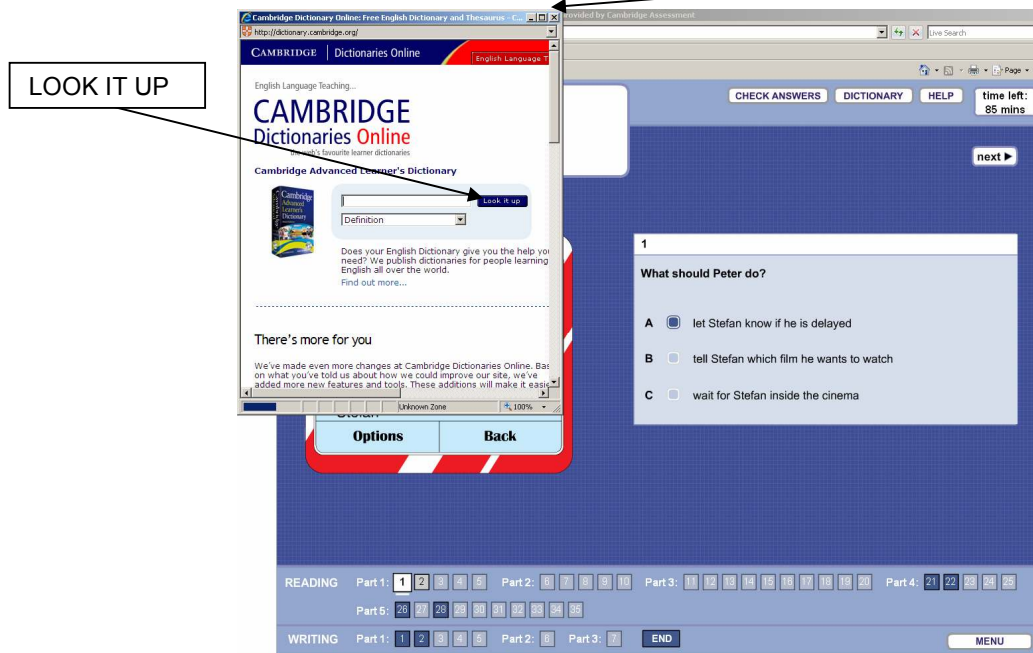
If you want to look up a word, click on the DICTIONARY button.



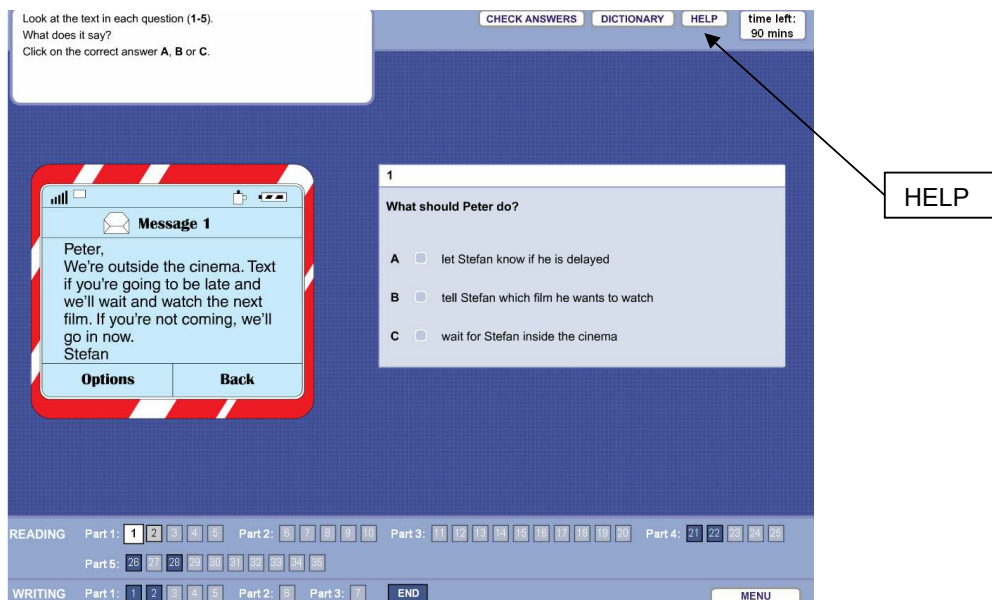
Type your word in the box in the dictionary screen and click on LOOK IT UP.

To close the dictionary, click on the cross in the corner.

To close the dictionary

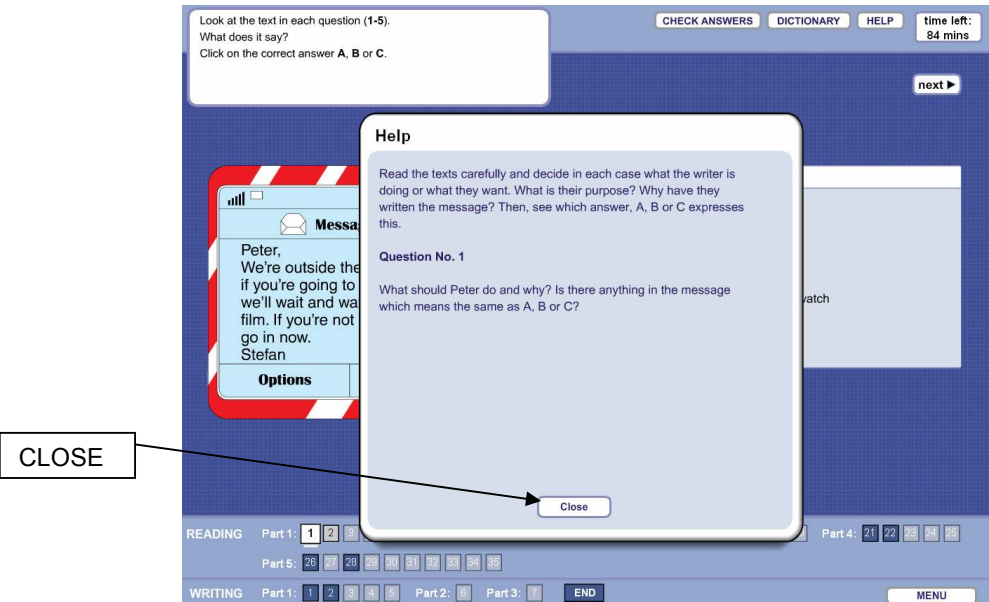


If you want help answering any of the questions in the test, click on the HELP button.



You can use the cursor to move the help screen if you want to.

Click on the CLOSE button to return to the test.

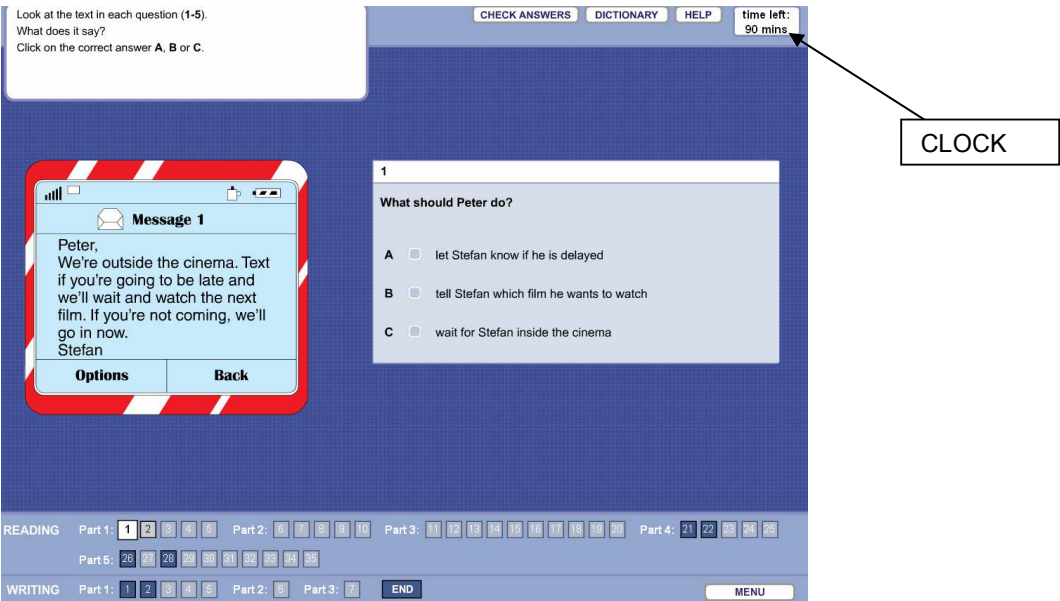


In the real exam, you have approximately 90 minutes to complete the test.

This free sample is shorter.

There is a clock at the top of the screen which tells you how much time you have left.

This clock will flash when you have 10 minutes and 5 minutes left.



The test will tell you when the time is up. If you want to end the test yourself, click on the END button.

When you have answered all of the questions, the SUBMIT ANSWERS button will appear in the bottom corner of the screen.

Please remember in the real Online Practice Test you can only submit your answers once.

The screenshot displays the Online Practice Test interface. At the top, a blue header bar contains buttons for 'CHECK ANSWERS', 'DICTIONARY', and 'HELP', along with a 'time left: 83 mins' indicator. Below the header, a white box contains instructions: 'Here are five sentences about a boy who likes basketball. Complete the second sentence so that it means the same as the first. Use no more than three words. Type only the missing words in the box.' The main content area is a large light blue box with a question number '2' in the top left. The text reads: 'Niko joined a basketball team three years ago. Niko has been in a basketball team for [input box] 3 years.' Below the question, a navigation bar shows 'READING' and 'WRITING' sections with numbered buttons for each part. The 'END' button is located at the bottom right of the navigation bar. A 'SUBMIT ANSWERS' button is located at the bottom right of the screen, with an arrow pointing to it from a box labeled 'SUBMIT ANSWERS'. A box labeled 'END' has an arrow pointing to the 'END' button in the navigation bar.

A scores screen will then appear. For some writing tasks you will not receive a score, but you will receive sample answers with examiner's comments for these tasks.

In the full test, the PRINT SCORES button will appear here. In the full test you can print scores for Reading & Writing and Listening.

In the full test, if you want your answers explained you can click on the ANSWER FEEDBACK button at the bottom of the screen.

Online Practice Test for PET for Schools
Free Sample

PRINT
SCORES

Scores

READING

Part 1	1/2
Part 2	Sorry - not available
Part 3	Sorry - not available
Part 4	0/2
Part 5	0/2
TOTAL : 1/6	

WRITING

Part 1	1/2
Part 2	Sorry - not available
Part 3	Sorry - not available

PRINT SCORES

ANSWER
FEEDBACK

UNIVERSITY of CAMBRIDGE
ESOL Examinations

MENUANSWER FEEDBACKEXIT

To exit the test, click on the EXIT button.

That is the end of the Free Sample Preliminary English Test for Schools Reading & Writing Tutorial.

Good luck with the Free Sample Preliminary English Test for Schools Online Practice Test for Reading & Writing.